

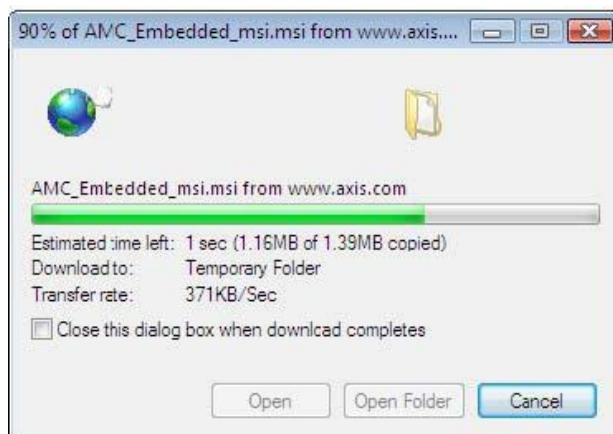
Click on the [AMC Embedded msi.msi](#) link.

A "File Download" box should appear. Click on "Run".

Note: If the "File Download" box does not appear shortly after clicking "Download File...", click again on "Download AMC Embedded msi.msi" and "I ACCEPT".



Wait for the download to complete.



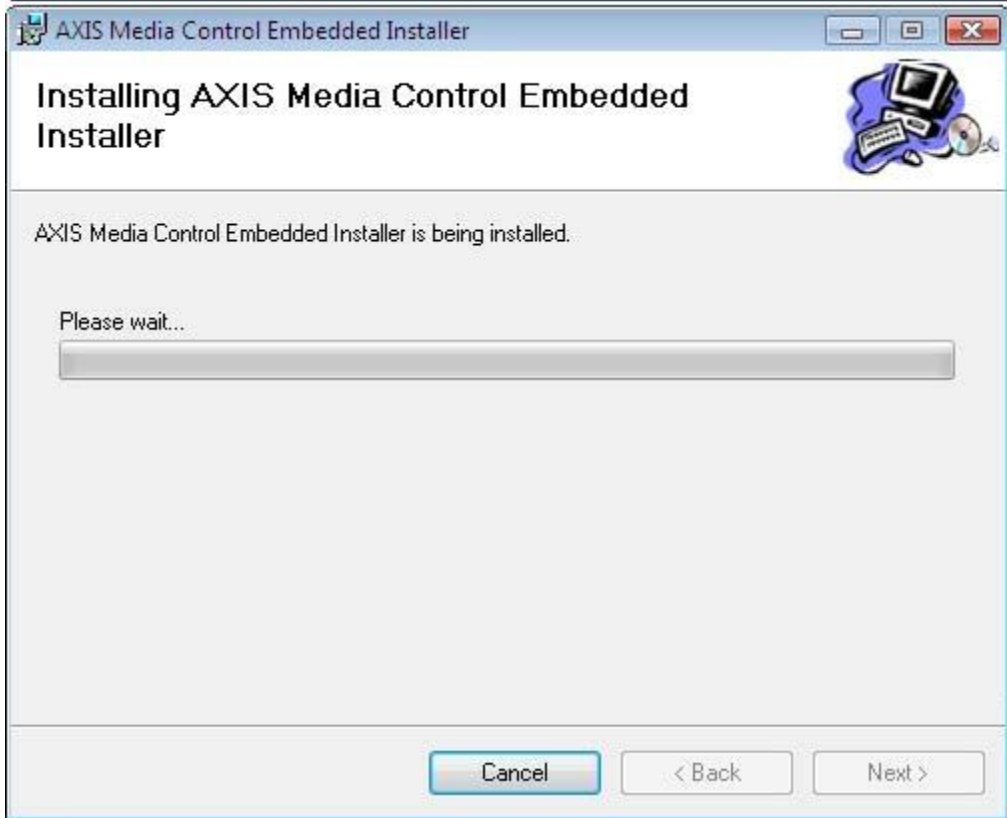
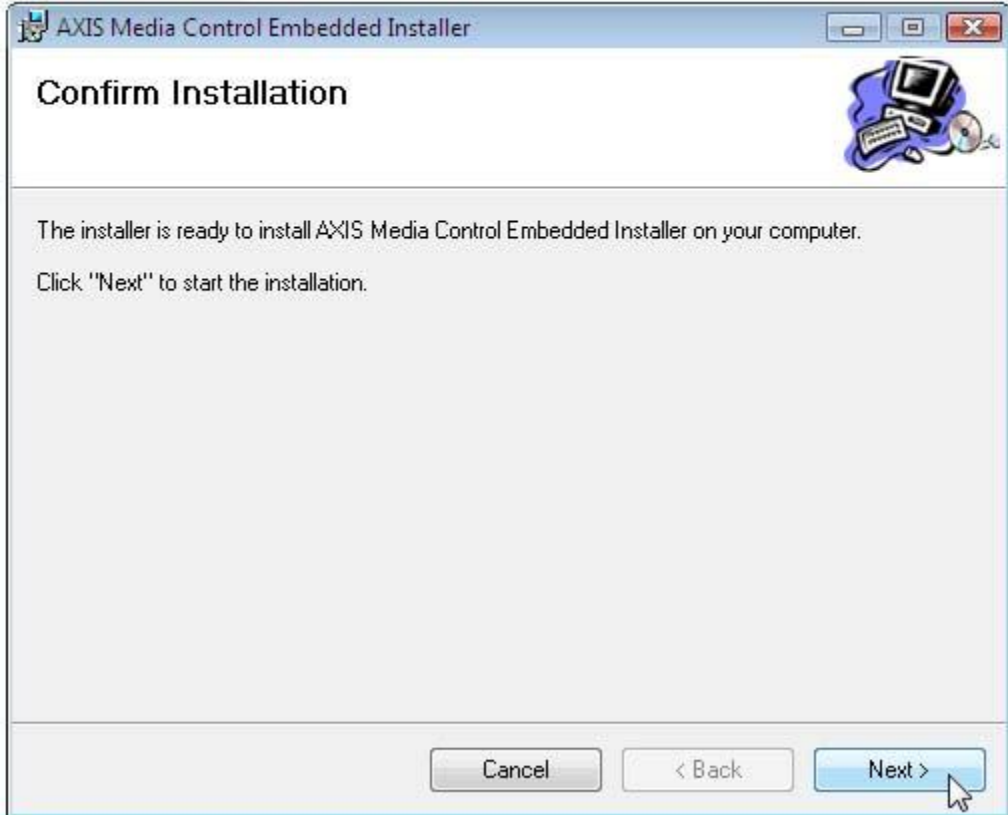
This security warning may appear. Click on "Run".



This "Windows Installer" box may appear for a few seconds. Wait for the installation to start. Do not click "Cancel".



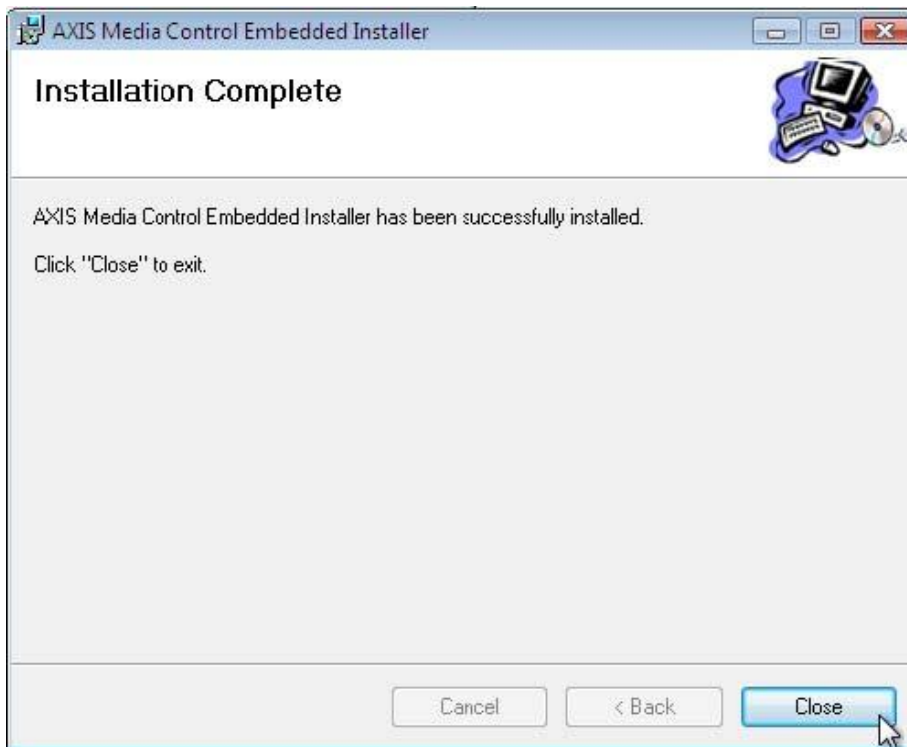
This window should appear. Click "Next" to start the installation. It will take a moment for AXIS Media Control to install. Do NOT click "Cancel".



This dialogue box may appear. Click "Continue".



When you have successfully completed the installation, the Windows Installation window should look like this. Click "Close".



You should now be able to view the Pet Cams.

Go back to www.thepawmankato.com and click on View Pet Cam. Click on the name of the camera you would like to view and click Go.

Public Pet Cams

Please select a camera below and click the "GO" button to view the live feed.

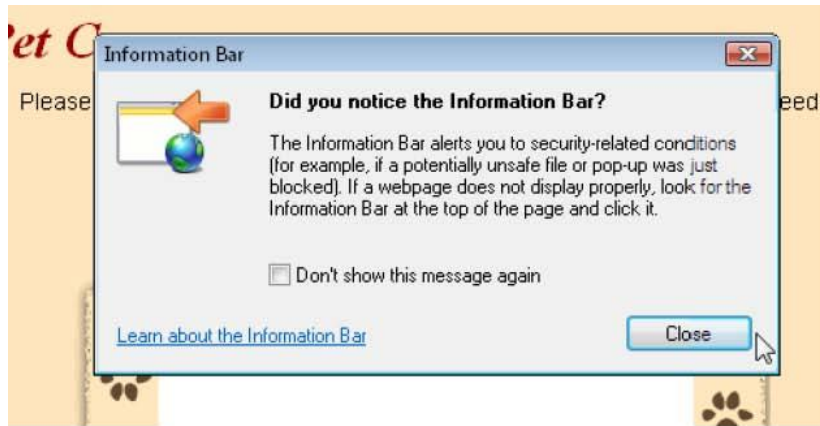
Having trouble viewing the cameras? [Click here for help](#)

Pool Cam A

- Select a camera...
- Lobby Cam
- Evaluation Room Cam
- Training Center Cam A
- Training Center Cam B
- Cat Condos Cam
- Pool Cam A
- Pool Cam B**
- Underwater Treadmill Cam
- Playground 4 Cam
- Playground 3 Cam B
- Playground 3 Cam A
- Playground 1 Cam
- Playground 2 Cam



Note: If the yellow information bar and dialogue box appear on the Pet Cam page, close the "Information Bar" box, click the yellow information bar at the top, and click "Download File..."



Watch the pets live! You should only have to follow these instructions once on each Windows Vista computer that you want to view the Pet Cams from.